



STOCK
COLOR
CHART

ALPOLIC®
METAL COMPOSITE MATERIALS

WE DO IT DIFFERENTLY

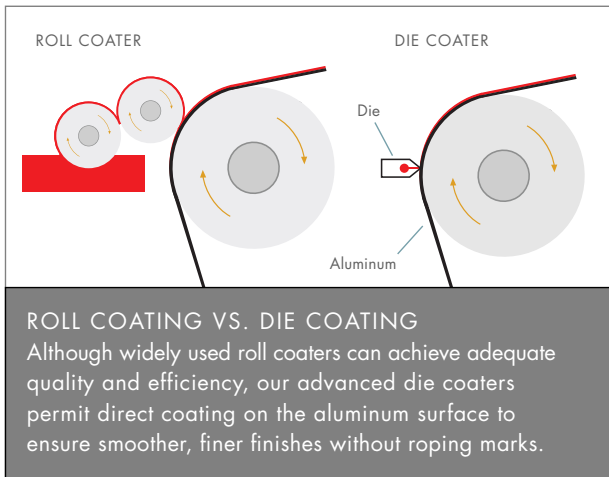
Whether it's our raw materials selection, our paint application, or even our crating, everything we do is meticulously crafted to deliver our customers a premium product they can trust. Our long-standing relationships with global paint suppliers allow us to color match most any shade imaginable, so if you can dream it, we likely can deliver it.

Unlike our competitors, we use a die-coating process to apply our paint, which delivers a smooth, even finish that is devoid of roping marks. And, our materials are manufactured with heat, pressure and tension through a continuous bonding process, ensuring consistent panel integrity. It's better for our products and the environment.

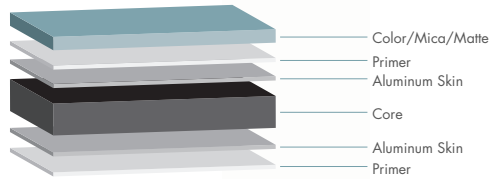
COLOR IS OUR FOUNDATION

Vibrant colors, more durable finishes, built-in graffiti resistance, unmatched color clarity and gloss comes standard at ALPOLIC. It's what you can expect from our use of the AAMA 2605-rated, second-generation fluoropolymer, Lumiflon® FEVE.

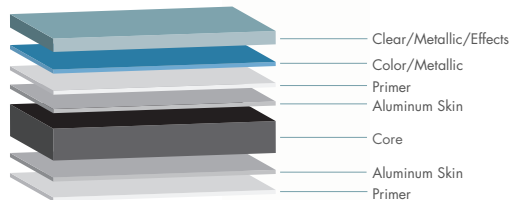
From the beginning, our MCM set an uncompromising standard. ALPOLIC grew from the bold, vivid colors of the petroleum industry to providing stately refinement to city landmarks.



2-Coat Solid/Mica/Matte

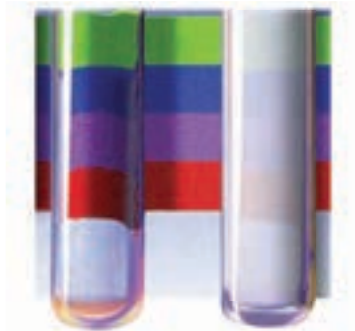


3-Coat Metallic/Effects



FEVE Resins

- 100% FEVE
- Clear resin
- Homogenous Solution
- Gloss range 10 – 70
- Wide color range
- Muted & bright colors
- Thermoset



PVDF Resins

- 70% PVDF + Acrylic
- Milky resin
- Dispersion solution
- Gloss range 6 – 40
- Moderate color range
- Muted colors only
- Thermoplastic



SAFE AND BEAUTIFUL

ALPOLIC® is more than just a pretty face. Like our customers, we take safety seriously. That's why we manufacture to precise requirements and even third-party certify our processes, assuring our products are safe when used in accordance with building codes. ALPOLIC MCM has been incorporated in numerous wall assemblies that have passed full-scale fire testing like the American NFPA 285 and Canadian S134.

Our rigid, yet lightweight, premium metal composite materials offer solutions to architects and designers so they can bring their visions to life. Our products can be finished in a nearly endless color selection and are highly flexible, allowing for easier fabrication. And with the industry's most comprehensive warranties, we stand behind our products, ensuring your project will be protected for 10, 20, 30, or even 35 years.

WHY CHOOSE ALPOLIC® MATERIALS?

Strongest Warranty

Covers both material and labor to execute warranty. In situ is unique to ALPOLIC.

Primed Both Sides of Skin

Inhibits oxidation and white rust that can adversely affect paint and core adhesion.

AAMA 2605 FEVE Paint

Highest performance criteria for architectural paint, exceeding 10 years in south Florida exposure test.

Graffiti Resistance

FEVE paints are inherently graffiti resistant, allowing markings to be removed with Watts Removal Cleaning Products.

Custom Production: 1,000 sq ft minimum

Provides flexibility in custom colors or custom sizes/cores to give client exactly what they want.

Sizes: 2mm, 3mm, 4mm, 6mm

Widest range of thicknesses to meet application needs.

Widths: 40, 48, 50, 51, 60, 62

Wide range of standard coil widths to optimize yields.

Technical Service Department

Dedicated resource for navigating performance, application, and code compliance.

Squared Sheet

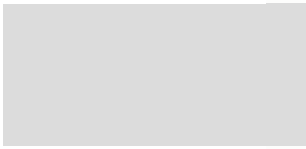
Eliminates the need to have to square one side before fabrication.

Product Good Side Up or Down

Easier loading onto CNC table.



401 Volvo Parkway, Chesapeake, VA 23320
Telephone: 800-422-7270 | Fax: 757-436-1896
www.alpolic-americas.com | e-mail: info@alpolic.com



CLR Clear Anodized



SMX Metallic Silver



OPT Mica Platinum



PEX Metallic Pewter



SOG Grey



TBX Metallic Silver



TSZ Metallic Silver



MNC Mica Anodic Clear



HLZ Aluminum



BSX Metallic Silver



4HL Stainless



TXG Grey



AGT Aluminum Grey



RRM River Rock Grey



MFS Mica Grey



HPA High Polished Aluminum



MZG Mica Grey



AZZ Quartz Zinc



BRUX Manganese Metallic



BGY Grey



CTBM Space Black



BSM Slate Black



DON Grey



MRO Anthracite Grey



CNC Charcoal



BLX Black



TOB Black



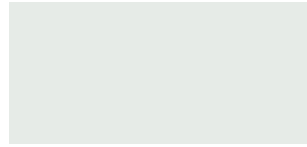
TBL Black



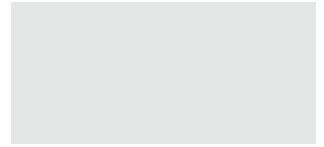
EWH White



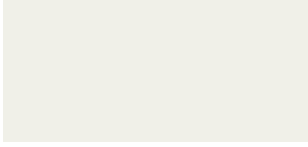
PLP White



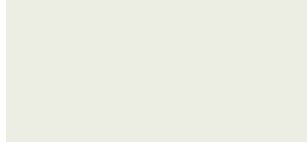
HWH White



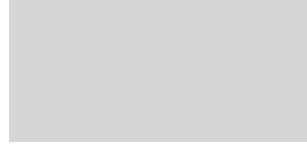
SAW White



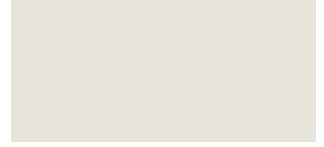
RVW White



CPW White



GAMA Bunny Grey



BNT Bone White



COW White



BPS Pearl



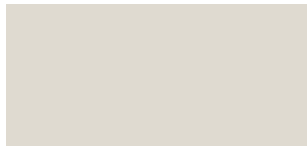
CRT Oyster



QJB Japanese Birch



MCV White



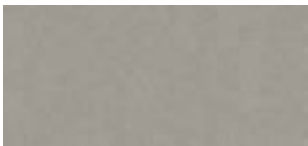
SWT White



MST Mist White



ETT Tan



CMX Metallic Champagne



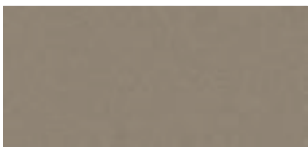
CVG Grey



CZZ Anthra Zinc



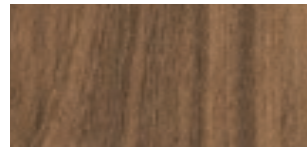
JBR Bronze



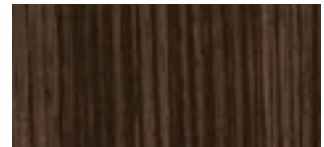
MCU Mica Champagne



SBR Bronze



QWP Wild Plum



QBT Zebra wood



MBX Metallic Bronze



QBV Oriental Cane



QBB Teak



QAW Rio Aleon



BYL Yellow



EYL Yellow



LYS Yellow



DQO Pearlescent Orange



QCP Harvest Trail Bamboo



MPL Maple



WLN Walnut



QCO Rusted Steel



C12 Copper



DCX Metallic Copper



TRM Terra Cotta



TELM Neon Red



TRD Red



FEF Red



FEF Red | MFS Mica Grey | FEF Red



BTR Red



TRC Red



WNX Red



RON Red



NSN Red



STR Red



BBR Red



TOR Red



WER Red



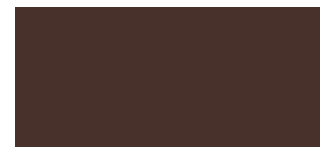
JLR Red



DQS Shimmer Maroon Gold



QAE Mahogany



LIN Brown



TDR Green



BGN Green



GRV Green

For expert assistance with product availability, material selection, sizing and colors, please contact your local ALPOLIC® sales manager.



AMOX Blue



ABE Blue



CVB Blue



HNB Blue



WAB Blue



DYB Blue



MBU Blue



CFB Blue



SHB Blue



RTB Blue



HYB Blue



AUB Blue

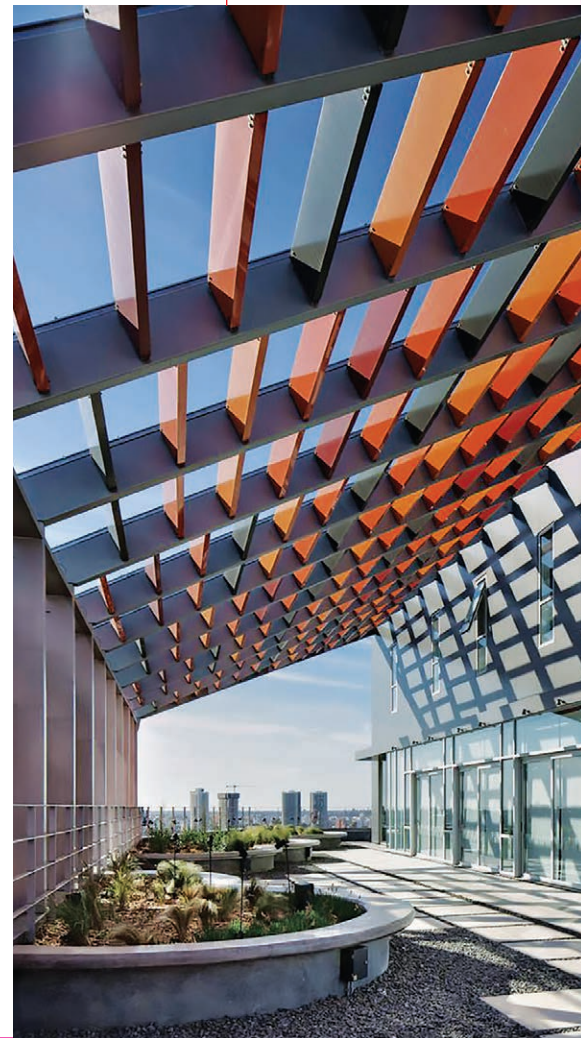


RAPT Blue



NSG Grey

TARJETA NARANJA
Cordoba, Argentina



Photography by Gonzalo Viramonte

We are here to help every step of the way.

For expert assistance with product availability, material selection, sizing and colors, please contact your local ALPOLIC® sales manager.

TARJETA NARANJA
Cordoba, Argentina

Color	Finish	Gloss	LRV	SRI	Warranty	FR	PE	BM	3mm	4mm
4HL Stainless	Natural Metal		28.9	34-Cool	Panel only	X				X
ABE Blue	2 Coat Solid	70	22.9		20		X			X
AGT Aluminum Grey	2 Coat Solid	30	31.8	26	35	X	X	X		X
AMOX Blue	3 Coat Solid	30	26.0		20	X				X
AUB Blue	2 Coat Solid	50	3.0		20		X			X
AZZ Quartz Zinc	Natural Metal		18.7		Panel only	X				X
BBR Red	2 Coat Solid	30	8.6		20		X		X	X
BGN Green	2 Coat Solid	50	14.9		10		X		X	
BGY Grey	2 Coat Solid	50	10.1	7	35	X	X	X		X
BLX Black	2 Coat Solid	30	0.9		20		X		X	X
BNT Bone White	2 Coat Solid	30	78.1	82-Cool	35	X	X	X		X
BPS Pearl	2 Coat Solid	30	66.7		20		X		X	
BRUX Manganese Metallic	3 Coat Metallic	30	6.3		20	X				X
BSM Slate Black	2 Coat Matte	10	4.6	1	20	X		X		X
BSX Metallic Silver	3 Coat Metallic	30	31.8	71-Cool	35	X	X	X		X
BTR Red	2 Coat Solid	50	11.8		20		X		X	X
BYL Yellow	2 Coat Solid	70	65.5		10		X		X	
C12 Copper	Natural Metal		1.8	5-Cool	Panel only	X				X
CFB Blue	2 Coat Solid	70	6.8		10		X		X	
CLR Clear Anodized	Anodized		26.0	84-Cool	5	X				X
CMX Metallic Champagne	3 Coat Metallic	30	28.2	59-Cool	35	X	X	X		X
CNC Charcoal	2 Coat Solid	30	4.2		30	X	X	X	X	X
COW White	2 Coat Solid	30	69.0		20		X			X
CPW White	2 Coat Solid	70	83.8		20		X			X
CRT Oyster	2 Coat Solid	30	72.0	82-Cool	35	X				X
CTBM Space Black	2 Coat Matte	10	3.4		20		X			X
CVB Blue	2 Coat Solid	70	13.0		20		X			X
CVG Grey	2 Coat Solid	50	14.7		20		X		X	X
CZZ Anthra Zinc	Natural Metal		4.2		Panel Only	X				X
DCX Metallic Copper	3 Coat Metallic	30	14.5	47-Cool	35	X				X
DON Grey	2 Coat Solid	30	6.3		20		X			X
DQO Pearlescent Orange	3 Coat Effects	70	22.9		20		X		X	
DQS Shimmer Maroon Gold	3 Coat Effects	70	5.6		10		X			X
DYB Blue	2 Coat Solid	50	9.5		10		X		X	
ETT Tan	2 Coat Solid	30	47.8		20		X		X	
EWB White	2 Coat Solid	70	88.0		10		X		X	
EYL Yellow	2 Coat Solid	70	50.6		20		X		X	
FEF Red	2 Coat Solid	70	11.4		10		X		X	
FEF Red MFS Mica Grey FEF Red	Multi Coat Stripe	FEF-70 MFS-30	14.7		10		X		X	
GAMA Bunny Grey	2 Coat Solid	30	66.8		20	X				X
GRV Green	2 Coat Solid	30	11.0		10		X		X	
HLZ Aluminum	2 Coat Decorative Metal	70	34.5		20	X	X			X
HNB Blue	2 Coat Solid	50	16.6		20		X	X		X
HPA High Polished Aluminum	2 Coat Decorative Metal	70	0.9		5		X		X	
HWH White	2 Coat Solid	50	80.0		20	X		X		X
HYB Blue	2 Coat Solid	30	3.8		20		X	X		X
JBR Bronze	2 Coat Solid	30	3.4	2	35	X	X	X		X
JLR Red	2 Coat Solid	50	5.4		20		X			X
LIN Brown	2 Coat Solid	30	3.4		20	X				X
LYS Yellow	2 Coat Solid	70	45.8		20		X		X	
MBU Blue	2 Coat Solid	30	9.7		20		X			X
MBX Metallic Bronze	3 Coat Metallic	30	28.5	40-Cool	35	X	X			X
MCU Mica Champagne	2 Coat Mica	30	22.6	38-Cool	35	X	X			X
MCV White	2 Coat Solid	70	67.6		10		X		X	
MFS Mica Grey	2 Coat Mica	30	14.0		30	X	X	X		X
MNC Mica Anodic Clear	2 Coat Mica	30	28.7	56-Cool	35	X	X	X		X
MPL Maple	3 Coat Timber Pattern	30	29.4		20	X				X
MRO Anihracite Grey	2 Coat Mica	70	3.1		20		X	X		X
MST Mist White	2 Coat Solid	30	69.6	75-Cool	35	X	X			X
MZG Mica Grey	2 Coat Mica	50	8.5	14	35	X	X	X		X
NSG Grey	2 Coat Solid	50	6.8		20		X			X
NSN Red	2 Coat Solid	70	8.7		20		X			X
OPT Mica Platinum	2 Coat Mica	50	28.6	53	35	X	X	X		X
PEX Metallic Pewter	3 Coat Metallic	30	20.4		30	X		X		X
PLP White	2 Coat Solid	70	86.5		20		X		X	
QAE Mahogany	3 Coat Timber Pattern	30	2.4		20	X				X
QAW Rio Aleon	3 Coat Timber Pattern	30	3.8		20	X				X
QBB Teak	3 Coat Timber Pattern	30	10.1		20	X				X
QBT Zebra wood	3 Coat Timber Pattern	30	2.3		20	X				X
QBV Oriental Cane	3 Coat Timber Pattern	30	37.9		20	X				X
QCO Rusted Steel	3 Coat Pattern	20	15.2		20	X				X
QCP Harvest Trail Bamboo	3 Coat Timber Pattern	30	28.8		20	X	X			X
QJB Japanese Birch	3 Coat Timber Pattern	30	44.5		20	X				X
QWP Wild Plum	3 Coat Timber Pattern	30	16.6		20	X				X
RAPT Blue	2 Coat Solid	30	2.9		10		X			X
RON Red	2 Coat Solid	70	9.5		20		X			X
RRM River Rock Grey	2 Coat Matte	10	22.7	17	20	X				X
RTB Blue	2 Coat Solid	70	4.2		10		X			X
RVW White	2 Coat Solid	50	86.1		35		X	X		X
SAW White	2 Coat Solid	70	79.9		20	X			X	X
SBR Bronze	2 Coat Solid	30	5.8		20		X		X	
SHB Blue	2 Coat Solid	70	8.7		20		X		X	
SMX Metallic Silver	3 Coat Metallic	30	31.4	63-Cool	35	X	X	X		X
SOG Grey	2 Coat Solid	70	49.4		20		X		X	
STR Red	2 Coat Solid	70	12.6		10		X		X	
SWT White	2 Coat Solid	30	72.1		20	X	X		X	X
TBL Black	2 Coat Solid	70	0.6		20		X		X	X
TBX Metallic Silver	3 Coat Metallic	30	33.1		35	X	X	X	X	X
TDR Green	2 Coat Solid	70	24.2		20	X				X
TELM Neon Red	2 Coat Matte	10	11.7		10	X				X
TOB Black	2 Coat Solid	15	1.1		35	X	X	X		X
TOR Red	2 Coat Solid	70	9.2		20		X	X		X
TRC Red	2 Coat Solid	30	9.0		20	X				X
TRD Red	2 Coat Solid	70	10.8		10		X		X	
TRM Terra Cotta	2 Coat Matte	10	16.7	12	20	X				X
TSZ Metallic Silver	3 Coat Metallic	70	29.1		35		X			X
TXG Grey	2 Coat Solid	70	39.3		20	X	X	X	X	X
WAB Blue	2 Coat Solid	30	17.9		20		X		X	
WER Red	2 Coat Solid	30	7.5		20		X			X
WLN Walnut	3 Coat Timber Pattern	30	13.5		20	X				X
WNX Red	3 Coat Solid	30	10.3		10		X			X